

# Spoo S.01 – Product Specification



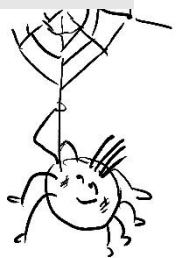
## Spooky Rookies – Haunted Playhouses for Toddlers

Spooky Rookies promote physical development. During climbing, sliding and romping in the many different playhouses, toddlers are able to test their skills.

It is possible to combine the playhouses' shape, size and colours. A stepladder, ramp or slide offer further constructive options. The diversity of Spooky Rookies are also enjoyed by four ghosts. They represent a colour concept in each case and live in the playhouses. Do not be afraid, the ghosts are pleased about every guest.

### Spoo S.01 – At a glance.

Product Family:	<b>Spooky Rookies</b>	Number of Foundations:	<b>7 pc.</b>
Item Number:	<b>90.295.000.1</b>	Concrete Volume C20/C25:	<b>0.7 m<sup>3</sup> (24.8 ft<sup>3</sup>)</b>
Children's Age:	<b>3+</b>	Number of skilled installers required:	<b>2</b>
Fall Height (DIN EN 1176):	<b>0.45 m (1'-6")</b>	Installation Time without foundation:	<b>4 hours</b>
Length x Width x Height:	<b>2.0 m x 2.3 m x 2.2 m (6'-7" x 7'-7" x 7'-3")</b>	Dimensions of largest part:	<b>1.2 m x 1.0 m (3'-12" x 3'-4")</b>
Protective Surfacing Area(DIN EN 1176):	<b>4.6 m x 5.3 m</b>	Weight of heaviest part:	<b>30 kg (66.2 lbs)</b>
Protective Surfacing Area (ASTM 1487):	<b>5.7 m x 6.0 m (18'-9" x 19'-9")</b>	Shipping Volume:	<b>Upon request</b>
Minimum space required DIN EN 1176:	<b>18.81 m<sup>2</sup></b>	Spare part guarantee:	<b>Lifelong</b>
Minimum space required ASTM 1487:	<b>25.03 m<sup>2</sup> (269.43 ft<sup>2</sup>)</b>	Certificate according to DIN EN 1176:	<b>No.: Z2 17 01 10256 240 TÜV Product Service</b>

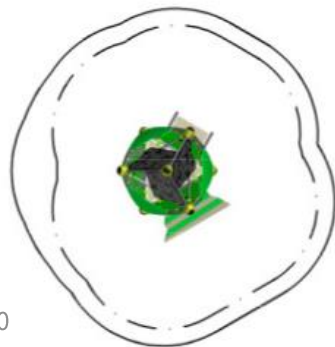


  
**Berliner**  
 Berliner Seilfabrik GmbH & Co.  
 Lengeder Straße 2/4  
 D-13407 Berlin

Tel. +49.(0)30.41 47 24-0  
 Fax +49.(0)30.41 47 24-33

info@berliner-seilfabrik.com  
 www.berliner-seilfabrik.com

# Spoo S.01 – Product Specification



scale 1:100



## Technical Data.

The following text can also be used for tenders.

- 1 haunted house with window
- 1 ramp
- 1 stepladder

### Posts:

Steel pipes  $\varnothing$  101.6 mm (0'-4"); wall thickness 4 mm (0'-1") with a round cast aluminum post top; anti-corrosion treatment and color finish: sandblasting and solvent-free zinc-/ epoxy-/ polyester-process

Cross tubes - stainless steel Framework-®tubes,  $\varnothing$  48 mm (0'-2")

### Nodes:

Framework-®aluminum ball connectors,  $\varnothing$  200 mm (0'-8"); anti-corrosion treatment and color finish: sandblasting and solvent-free zinc-/ epoxy-/ polyester-process; securely closed with durable EPDM-caps

### Panels/Ramp:

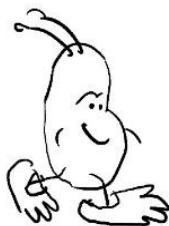
HDPE-panel (roof and walls), thickness 19 mm (3/4"), panel connected to steel pipes (for more details, see members) with cast aluminum panel clamps; non-skid HPL-panel (bottom and ramp), thickness 19 mm (3/4")

### Connections:

Number of mechanical components as less as possible; all bolts and nuts exposing permanently to the weather consist of stainless steel

### Stepladder:

Non-skid HPL-tiles (steps), thickness 19 mm (3/4"); curved stainless steel handrails



  
**Berliner**  
Berliner Seilfabrik GmbH & Co.  
Lengeder Straße 2/4  
D-13407 Berlin

Tel. +49.(0)30.41 47 24-0  
Fax +49.(0)30.41 47 24-33

info@berliner-seilfabrik.com  
www.berliner-seilfabrik.com